

CERTIFICATE OF ANALYSIS

For improved performance
dye concentrations were changed

Lambda DNA/EcoRI+HindIII Marker, 3

#SM0191 250(5x50)µg

Lot:

Concentration: 0.5µg/µl

Supplied with: 2x1ml **6X Loading Dye Solution**

Store at –20°C.

Description

Lambda DNA was completely digested with EcoRI and HindIII, purified and dissolved in a storage buffer. The DNA Marker contains the following 13 discrete fragments (in base pairs): 21226*, 5148, 4973, 4268, 3530*, 2027, 1904, 1584, 1375, 947, 831, 564, 125.

Storage Buffer

10mM Tris-HCl (pH7.6), 1mM EDTA.

6X Loading Dye Solution

10mM Tris-HCl (pH 7.6), 0.03% bromophenol blue, 0.03% xylene cyanol FF, 60% glycerol and 60mM EDTA.

Quality Control Assay Data

Agarose gel electrophoretic analysis of homogeneity of EcoRI+HindIII fragmentation patterns.

Quality authorized by:



Jurgita Zilinskiene

RECOMMENDATIONS FOR USE

- Vortex gently just prior to use.
- Prepare the DNA Marker before loading:
1µl (0.5µg) of the DNA Marker;
1µl of 6X Loading Dye Solution;
4µl of deionized water.
- Heat for 5min at 65°C and then cool on ice for 3min (see *Note*).
- Apply the prepared amount (6µl) of the DNA Marker on a 5mm lane of agarose gel.
- Following electrophoretic separation on gel, visualize the DNA bands by ethidium bromide staining.

Note

- One vial (50µg) is sufficient for ~100 applications.
- Use 0.1µg (0.2µl) of the DNA Marker (before dilution) per 1mm of an agarose gel lane width.
- The cohesive ends of the 12nt *cos* site of bacteriophage lambda from fragments of 21226bp and 3530bp (indicated*) may anneal and form an additional band at 24756bp. These fragments can be separated by heating at 65°C for 5min and then cooling on ice for 3min.

PRODUCT USE LIMITATION.

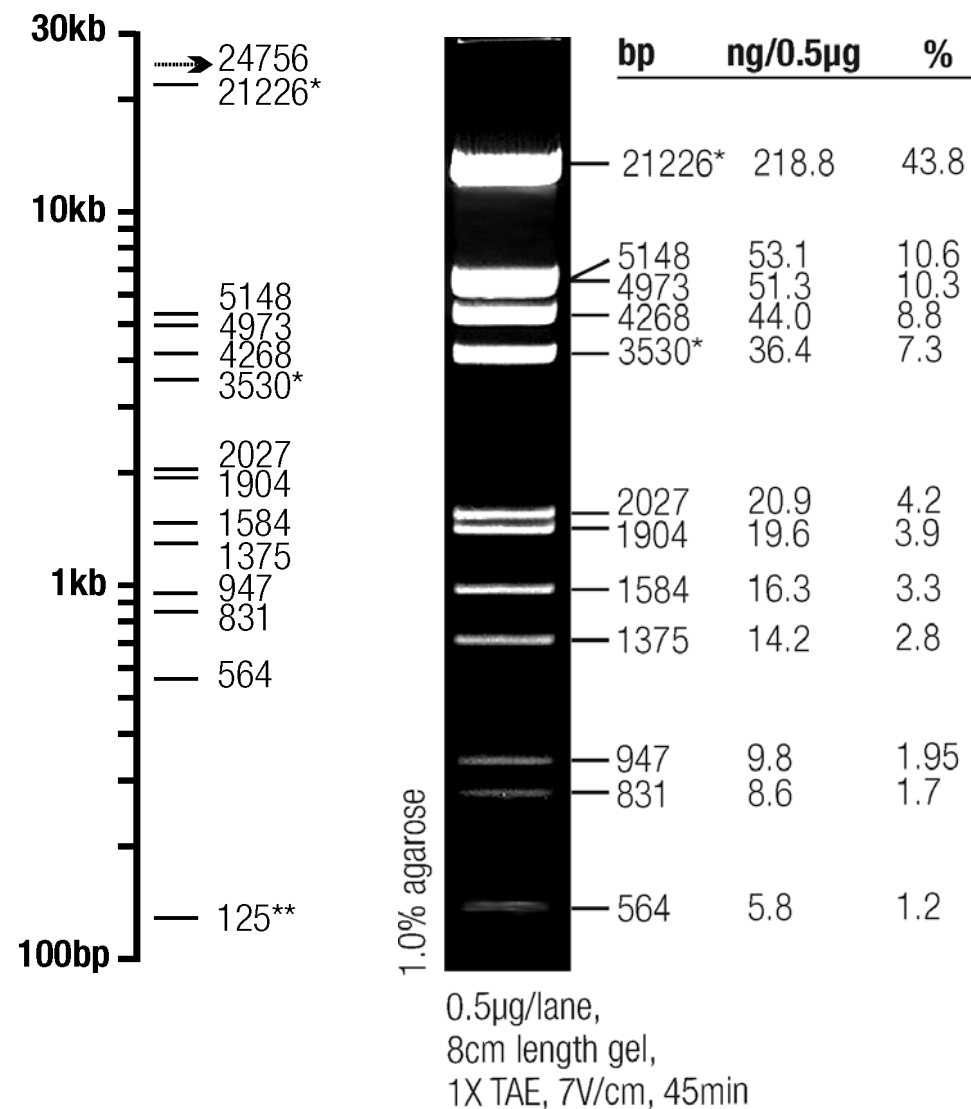
This product is developed, designed and sold exclusively *for research purposes and in vitro use only*. The product was not tested for use in diagnostics or for drug development, nor is it suitable for administration to humans or animals.

Please refer to www.fermentas.com for Material Safety Data Sheet of the product.

Revised 13.01.2005

Lambda DNA/EcoRI+HindIII Marker, 3

Fragment sizes



Fragments indicated* – see Note above.

The 125** bp fragment is not visible on gel (it makes 0.3%).